



SSP - Agri-Power Engineered Chains

SSP - AGRI-POWER ENGINEERED CHAINS

Agricultural Chains	1.3.4
Detachable Chain	1.3.4
CA Series Roller Chain	1.3.4
Pressed Steel Roller Chain	1.3.4
AGRI-POWER ANSI & BS Roller Chain	1.3.5
ANSI Roller Chain	1.3.6
ANSI Heavy Series Chain	1.3.7
Motorcycle Chain	1.3.7
BS Roller Chain	1.3.8
Straight Side Plate Chain	1.3.8
Roller Chain Reels	1.3.9
ANSI & BS Series Chain	1.3.9
Heavy Duty Series Chain	1.3.9
Agricultural Chain	1.3.9
Double Pitch Chain	1.3.10
208B & 212B Chain	1.3.10
Drag Chain	1.3.11
Engineered Steel Bushing Chain	1.3.11
BL Series Leaf Chain	1.3.11
Lumber Conveyor Chain	1.3.12
Milk Crate Chain	1.3.12
Pintle Chain "H"	1.3.13
Roof Top Chain	1.3.13
Combination Chain	1.3.13
Stainless Steel Chain	1.3.14
BS Stainless Steel Chain	1.3.14
ANSI Stainless Steel Chain	1.3.14
Double Pitch (Conveyor) Stainless Steel Chain	1.3.14
Steel Pintle Chain	1.3.15
Timber Transfer Chain	1.3.15
Welded WH Chain	1.3.15
Chain Quick Reference Chart	1.3.16

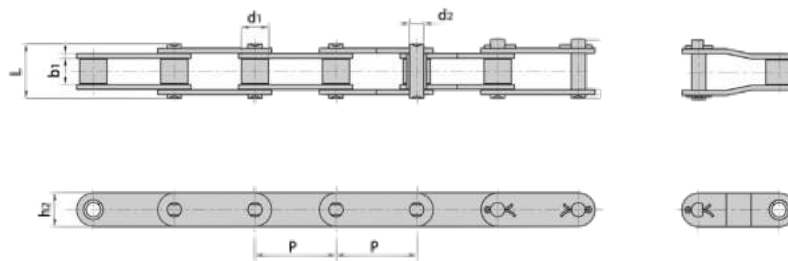


Detachable Chain



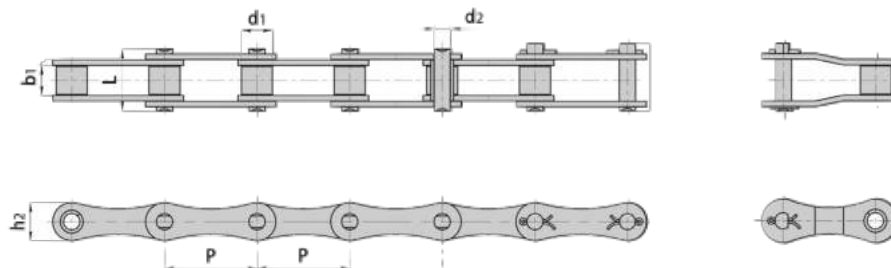
Chain No	Pitch	D	F	M	T	Tensile strength	Weight per meter
	(mm)					(KN)	(kg/m)
S25 DET	22.96	10.72	4.572	17.8	1.854	3.382	0.30
S32 DET	29.39	15.09	5.842	23.8	2.286	5.874	0.48
S42 DET	34.93	-	-	-	-	-	-
S51 DET	28.78	17.86	5.893	27.8	2.540	7.496	0.60
S52 DET	38.30	21.44	7.696	35.7	2.048	9.612	0.983
S55 DET	41.40	20.22	8.128	32.5	3.175	9.968	0.924
S62 DET	42.01	24.99	8.51	39.7	3.76	15.56	1.35

CA Series Roller Chain

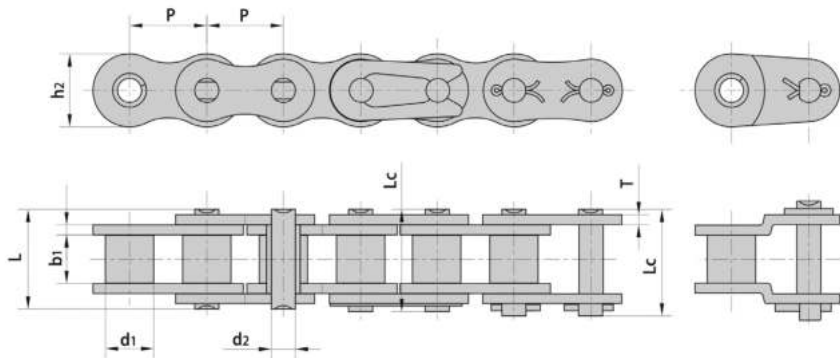


DIN ISO Chain No	Pitch	d1 max	b1 min	h2 max	d2 max	L max	Min. T.S	A.T.S	Weight
	mm	mm	mm	mm	mm	mm	kN	kN	kg/m
CA550	41.4	16.66	19.81	19.30	7.19	35.00	39.10	51.20	1.94
CA557	41.40	17.78	20.24	23.10	7.92	37.10	55.60	66.72	2.623

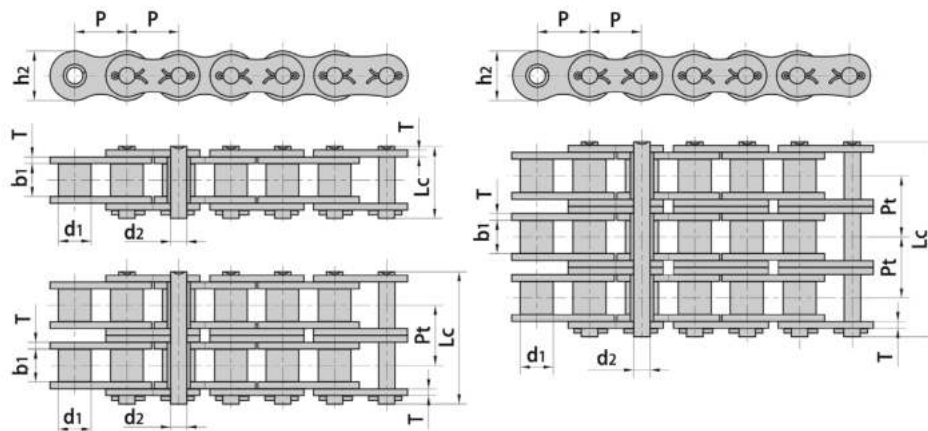
Pressed Steel Roller Chain



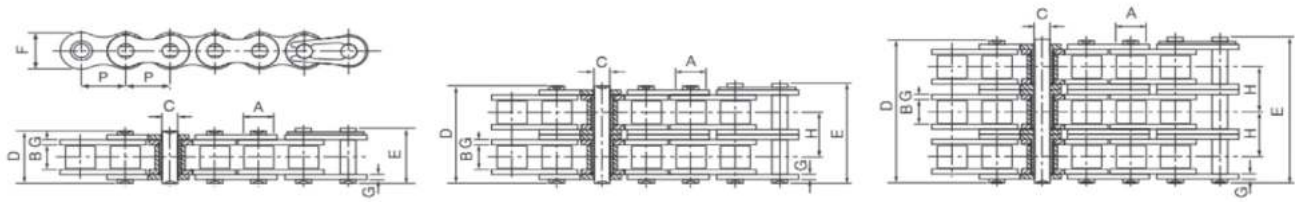
Chain	Pitch	d1	b1	h2	d2	L	U.T.S KN	A.T.S KN	KG/ft
S32	29.21	11.43	15.88	13.4	4.45	26.7	8	9.6	0.28
S42	34.96	14.27	19.05	-	-	-	-	-	-
S52	38.1	15.24	22.23	17.2	5.74	36.9	17.8	21.36	0.55
S55	41.4	17.78	22.23	17.2	5.74	36.9	17.8	21.36	0.57
S62	41.91	19.05	25.4	17.2	5.74	40	26.7	32.04	0.66
S77	58.34	18.26	22.23	-	-	-	-	-	-



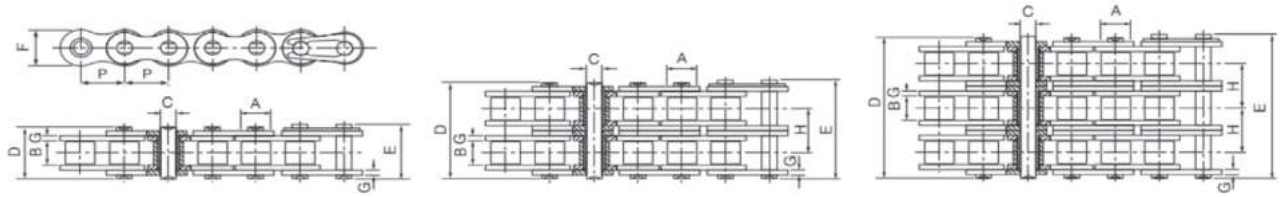
Chain No.	Pitch	Roller diameter	Width between inner plates	Pin diameter	Pin length		Inner plate depth	Plate thickness	Ultimate tensile strength	Average tensile strength	Weight per meter
	p	d1 max	b1 min	d2 max	L max	Lc max	h2 max	T max			
	mm	mm	mm	mm	mm	mm	mm	mm			
40-1	12.70	7.95	7.85	3.96	16.60	17.80	12.00	1.50	14.10/3205	17.5	0.62
50-1	15.875	10.16	9.40	5.08	20.70	22.20	15.09	2.03	22.20/5045	29.4	1.02
60-1	19.05	11.91	12.57	5.94	25.90	27.70	18.00	2.42	31.80/7227	41.5	1.50
80-1	25.40	15.88	15.75	7.92	32.70	35.00	24.00	3.25	56.70/12886	69.4	2.60
08B-1	12.700	8.51	7.75	4.45	16.70	18.20	11.80	1.60	18.00	19.40	0.69
10B-1	15.875	10.16	9.65	5.08	19.50	20.90	14.70	1.70	22.40	27.50	0.93
12B-1	19.050	12.07	11.68	5.72	22.50	24.20	16.00	1.85	29.00	32.20	1.15
16B-1	25.400	15.88	17.02	8.28	36.10	37.40	21.00	4.15/3.1	60.00	72.80	2.71



Chain No.	Pitch	Roller diameter	Width between inner plates	Pin diameter	Pin length	Inner plate depth	Plate thickness	Ultimate tensile strength	Average tensile strength	Weight per meter
	p	d1 max	b1 min	d2 max	L max	h2 max	T max			
	mm	mm	mm	mm	mm	mm	mm			
50H	15.875	10.16	9.40	5.08	24.4	15.09	2.42	22.2/5045	30.2	1.25
60H	19.05	11.91	12.57	5.94	31.6	18.00	3.25	31.8/7227	42.7	1.87
80H	25.40	15.88	15.75	7.92	39.4	24.00	4.00	56.7/12886	71.4	3.10

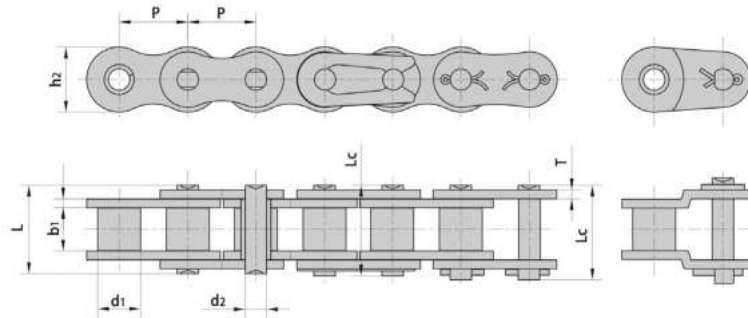


ISO Chain No.	Pitch	Roller diameter	Width between inner plates	Pin diameter	Pin length		Inner plate height	Plate thickness	Transverse pitch	Minimum tensile strength	Average tensile strength	Weight per meter
	P	A	B	C	D	E	F	g/G	H			
	mm	mm	mm	mm	mm	mm	mm	mm	mm			
SIMPLEX												
25-1	6.350	3.30	3.18	2.31	7.90	8.40	6.00	0.80	-	3.5	4.6	0.15
35-1	9.525	5.08	4.77	3.58	12.40	13.17	9.00	1.30	-	7.9	10.8	0.33
41-1	12.700	7.77	6.25	3.58	13.75	15.00	9.91	1.30	-	6.87	12.6	0.41
40-1	12.700	7.95	7.85	3.96	16.60	17.80	12.00	1.50	-	14.1	17.5	0.62
50-1	15.875	10.16	9.40	5.08	20.70	22.20	15.09	2.03	-	22.2	29.4	1.02
60-1	19.050	11.91	12.57	5.94	25.90	27.70	18.00	2.42	-	31.8	41.5	1.50
80-1	25.400	15.88	15.75	7.92	32.70	35.00	24.00	3.25	-	56.7	69.4	2.60
100-1	31.750	19.05	18.90	9.53	40.40	44.70	30.00	4.00	-	88.5	109.2	3.91
120-1	38.100	22.23	25.22	11.10	50.30	54.30	35.70	4.80	-	127.0	156.3	5.62
140-1	44.450	25.40	25.22	12.70	54.40	59.00	41.00	5.60	-	172.4	212.0	7.50
160-1	50.800	28.58	31.55	14.27	64.80	69.60	47.80	6.40	-	226.8	278.9	10.10
200-1	63.500	39.68	37.85	19.85	80.30	87.20	60.00	8.00	-	353.8	431.6	16.15
DUPLEX												
35-2	9.525	5.08	4.77	3.58	22.50	23.30	9.00	1.30	10.13	15.8	19.7	0.63
40-2	12.700	7.95	7.85	3.96	31.00	32.20	12.00	1.50	14.38	28.2	35.9	1.12
50-2	15.875	10.16	9.40	5.08	38.90	40.40	15.09	2.03	18.11	44.4	58.1	2.00
60-2	19.050	11.91	12.57	5.94	48.80	50.50	18.00	2.42	22.78	63.6	82.1	2.92
80-2	25.400	15.88	15.75	7.92	62.70	64.30	24.00	3.25	29.29	113.4	141.8	5.15
100-2	31.750	19.05	18.90	9.53	76.40	80.50	30.00	4.00	35.76	177.0	219.4	7.80
120-2	38.100	22.23	25.22	11.10	95.80	99.70	35.70	4.80	45.44	254.0	314.9	11.70
140-2	44.450	25.40	25.22	12.70	103.30	107.90	41.00	5.60	48.87	344.8	427.5	15.14
160-2	50.800	28.58	31.55	14.27	123.30	128.10	47.80	6.40	58.55	453.6	562.4	20.14

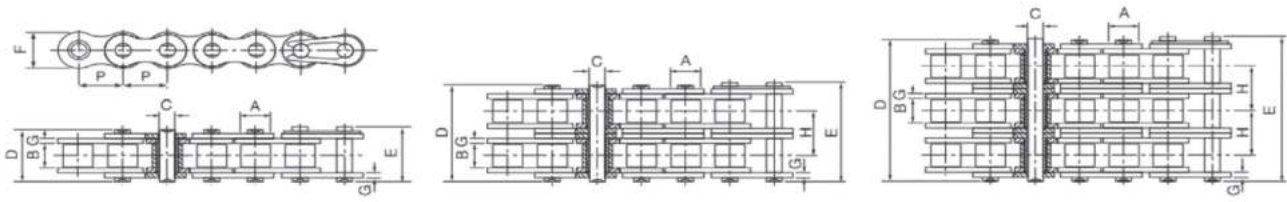


ISO Chain No.	Pitch	Roller diameter	Width between inner plates	Pin diameter	Pin length		Inner plate height	Plate thickness	Transverse pitch	Minimum tensile strength	Average tensile strength	Weight per meter
	P	A	B	C	D	E	F	g/G	H			
	mm	mm	mm	mm	mm	mm	mm	6.35	mm			
25H-1	6.35	3.3	3.18	2.310	-	-	-	-	-	-	-	-
40H-1	12.7	7.925	7.925	-	-	-	-	-	-	-	-	-
50H-1	15.875	10.16	9.40	5.08	22.10	23.40	15.09	2.42	-	22.20	30.20	1.25
60H-1	19.050	11.91	12.57	5.94	29.20	31.00	18.00	3.25	-	31.80	42.70	1.87
80H-1	25.400	15.88	15.75	7.92	36.20	37.70	24.00	4.00	-	56.70	71.40	3.10
100H-1	31.750	19.05	18.90	9.53	43.60	46.90	30.00	4.80	-	88.50	112.40	4.52

Motorcycle Chain



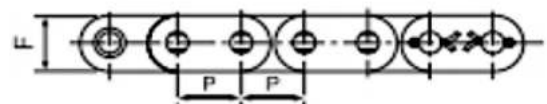
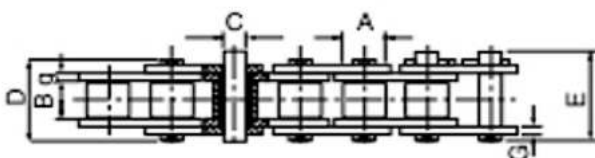
Chain No.	Pitch	Roller diameter	Width between inner plates	Pin diameter	Pin length		Inner plate depth	Plate thickness	Minimum tensile strength	Average tensile strength	Weight per meter
	p	d1 max	b1 min	d2 max	L max	Lc max	h2 max	T max			
415H	12.7	7.77	4.76	3.97	12.8	14.3	11.7	1.5	6.86	7.6	0.32



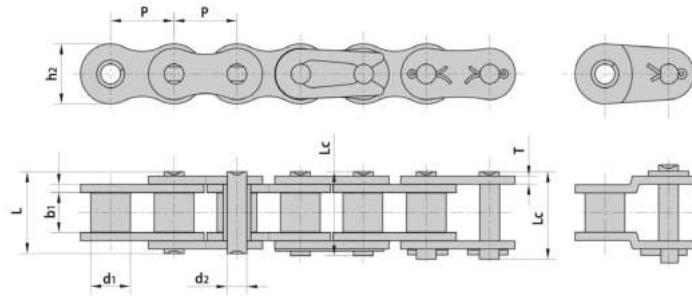
ISO Chain No.	Pitch	Roller diameter	Width between inner plates	Pin diameter	Pin length		Inner plate height	Plate thickness	Transverse pitch	Minimum tensile strength	Average tensile strength	Weight per meter
	P	A	B	C	D	E	F	g/G	H			
	mm	mm	mm	mm	mm	mm	mm	mm	mm			
SIMPLEX												
05B-1	8.000	5.00	3.00	2.31	8.20	8.90	7.10	0.8	-	5.00	5.90	0.20
06B-1	9.525	6.35	5.72	3.28	13.15	14.10	8.20	1.30	-	9.00	10.40	0.41
08B-1	12.700	8.51	7.75	4.45	16.70	18.20	11.80	1.60	-	18.00	19.40	0.69
10B-1	15.875	10.16	9.65	5.08	19.50	20.90	14.70	1.70	-	22.40	27.50	0.93
12B-1	19.050	12.07	11.68	5.72	22.50	24.20	16.00	1.85	-	29.00	32.20	1.15
16B-1	25.400	15.88	17.02	8.28	36.10	37.40	21.00	4.15/3.1	-	60.00	72.80	2.71
20B-1	31.750	19.05	19.56	10.19	41.30	45.00	26.40	4.5/3.5	-	95.00	106.70	3.70
24B-1	38.100	25.40	25.40	14.63	53.40	57.80	33.20	6.0/4.8	-	160.00	178.00	7.10
28B-1	44.450	27.94	30.99	15.90	65.10	69.50	36.70	7.5/6.0	-	200.00	222.00	8.50
32B-1	50.800	29.21	30.99	17.81	66.00	71.00	42.00	7.0/6.0	-	250.00	277.50	10.25
DUPLEX												
06B-2	9.525	6.35	5.72	3.28	23.40	24.40	8.20	1.30	10.24	16.90	18.70	0.77
08B-2	12.700	8.51	7.75	4.45	31.20	32.20	11.80	1.60	13.92	32.00	38.70	1.34
10B-2	15.875	10.16	9.65	5.08	36.10	37.50	14.70	1.70	16.59	44.50	56.20	1.84
12B-2	19.050	12.07	11.68	5.72	42.00	43.60	16.00	1.85	19.46	57.80	66.10	2.31
16B-2	25.400	15.88	17.02	8.28	68.00	69.30	21.00	4.15/3.1	31.88	106.00	133.00	5.42
20B-2	31.750	19.05	19.56	10.19	77.80	81.50	26.40	4.5/3.5	36.45	170.00	211.20	7.20
24B-2	38.100	25.40	25.40	14.63	101.70	106.20	33.20	6.0/4.8	48.36	280.00	319.20	13.40
28B-2	44.450	27.94	30.99	15.90	124.60	129.10	36.70	7.5/6.0	59.56	360.00	406.80	16.60
TRIPLEX												
08B-3	12.7	8.509	7.747	-	-	-	-	-	-	-	-	-
10B-3	15.875	10.16	9.65	5.08	53.8	55.15	14.70	1.70	16.59	66.80	84.50	2.71
12B-3	19.050	12.065	11.684	-	-	-	-	-	-	-	-	-
16B-3	25.400	15.88	17.02	8.28	101.9	105.25	21.00	4.15/3.1	31.88	126.80	203.70	7.75

Straight Side Plate Chain

Chain	Pitch	Roller diameter	Width between inner plates	Pin diameter	Pin length		Inner plate height	Plate thickness	Minimum tensile strength	Average tensile strength	Weight per meter
	P	A	B	C	D	E	F	g/G	kN	kN	kg/m
12B-1GL	19.050	12.07	11.68	5.72	22.50	24.20	16.00	1.85	29.00	32.2	1.32



ANSI & BS Series Chain

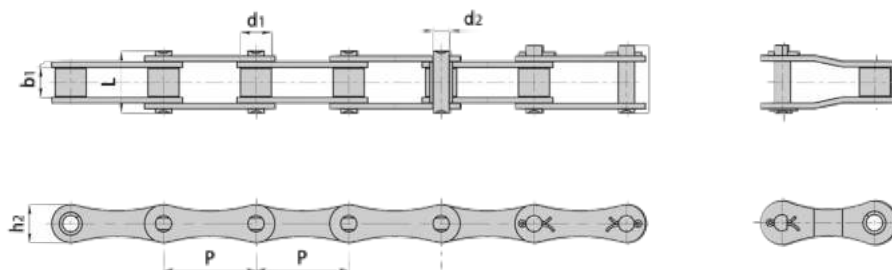


Chain No.	Reel Length	Pitch	Roller diameter	Width between inner plates	Pin diameter	Pin length		Inner plate depth	Plate thickness	Minimum tensile strength	Average tensile strength	Weight per meter
		p	d1 max	b1 min	d2 max	L max	Lc max	h2 max	T max			
		ft	mm	mm	mm	mm	mm	mm	mm			
40-1	100	12.70	7.95	7.85	3.96	16.60	17.80	12.00	1.50	14.10/3205	17.5	0.62
50-1	100	15.875	10.16	9.40	5.08	20.70	22.20	15.09	2.03	22.20/5045	29.4	1.02
60-1	100	19.05	11.91	12.57	5.94	25.90	27.70	18.00	2.42	31.80/7227	41.5	1.50
80-1	50	25.40	15.88	15.75	7.92	32.70	35.00	24.00	3.25	56.70/12886	69.4	2.60
06B-1	100	9.525	6.35	5.72	3.28	13.15	14.10	8.20	1.30	9.00	10.40	0.41
08B-1	100	12.700	8.51	7.75	4.45	16.70	18.20	11.80	1.60	18.00	19.40	0.69
10B-1	100	15.875	10.16	9.65	5.08	19.50	20.90	14.70	1.70	22.40	27.50	0.93
12B-1	100	19.050	12.07	11.68	5.72	22.50	24.20	16.00	1.85	29.00	32.20	1.15

Heavy Duty Series Chain

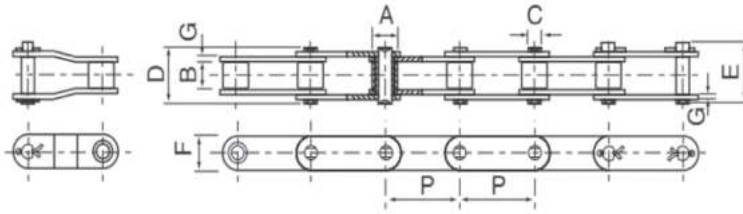
Chain No.	Reel Length	Pitch	Roller diameter	Width between inner plates	Pin diameter	Pin length		Inner plate height	Plate thickness	Minimum tensile strength	Average tensile strength	Weight per meter
		p	d1 max	b1 min	d2 max	L max	Lc max	h2 max	T max			
		ft	mm	mm	mm	mm	mm	mm	mm			
60H	50	19.050	11.91	12.57	5.94	29.20	31.00	18.00	3.25	31.80	42.70	1.87
80H	50	25.400	15.88	15.75	7.92	36.20	37.70	24.00	4.00	56.70	71.40	3.10

Agricultural Chain

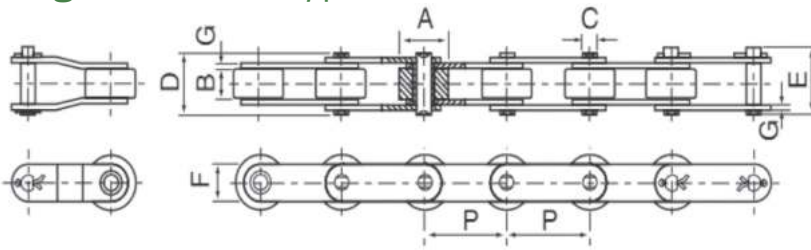


Chain No.	Reel Length	Pitch	d1	b1	h2	d2	L	U.T.S KN	A.T.S KN	KG/ft
S32	100	29.21	11.43	15.88	13.4	4.45	26.7	8	9.6	0.28

Small Roller S Type



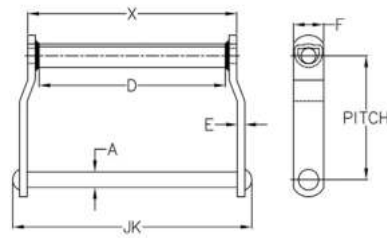
Large Roller R Type



ANSI Chain No.	Pitch		Roller diameter		Width between inner plates		Pin diameter		Pin length		Inner plate height	Plate thickness	Minimum tensile strength	Average tensile strength	Weight per meter
	P	A	B	C	D	E	F	G							
	mm	mm	mm	mm	mm	mm	mm	mm	kN	kN					
C2040	25.40	7.95	7.85	3.96	16.60	17.80	12.00	1.50	14.10	16.70	0.50				
C2042H		15.88										17.20	0.65		
C2050	31.75	10.16	9.40	5.08	20.70	22.20	15.00	2.03	22.20	28.10	0.78				
C2052		19.05										1.27			
C2060H	38.10	11.91	12.57	5.94	29.20	31.60	18.00	3.25	31.80	41.60	1.44				
C2062H		22.23										2.07			
C2080H	50.80	15.88	15.75	7.92	36.20	39.40	24.40	4.00	56.70	70.00	2.54				
C2082H		28.58										3.58			
C2100H	63.5	-	18.9	-	-	-	-	-	-	-	-				
C2160H	101.60	28.58	31.75	14.28	67.7	72.9	47.6	6.4	226.8	278.9	8.23				
C2052HPX50FT	31.75	19.05	9.40	5.08	20.70	22.20	15.00	2.03	22.20	28.10	1.27				

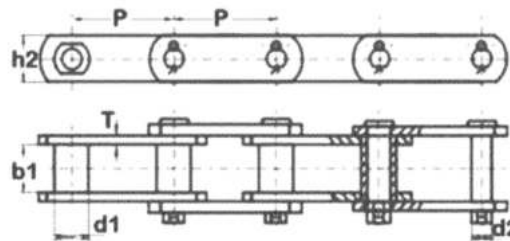
208B & 212B Chain

DIN ISO Chain No.	Pitch		d1 max	b1 min	d2 max	h2 max	L max	Lc max	Min.T.S	A.T.S	Weight
	mm	mm	mm	mm	mm	mm	mm	mm	KN	KN	kg/m
208B	25.4	1"	8.51	7.75	4.45	11.80	17.00	16.70	18.00	19.40	0.45
212B	38.10	1 1/2"	12.07	11.68	5.72	16.10	22.45	23.40	29.00	32.20	0.78



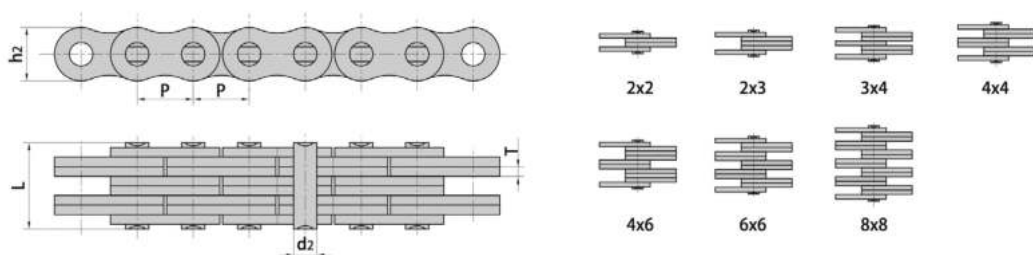
Chain	Pitch mm	Pitch inch	JK	X	A	E	D	F	Rated Working Lbs	A.T.S Lbs	App Kg/ft
WD110	152.40	6	301.62	263.52	19.05	9.52	228.60	38.10	8,500	51,000	5.46

Engineered Steel Bushing Chain

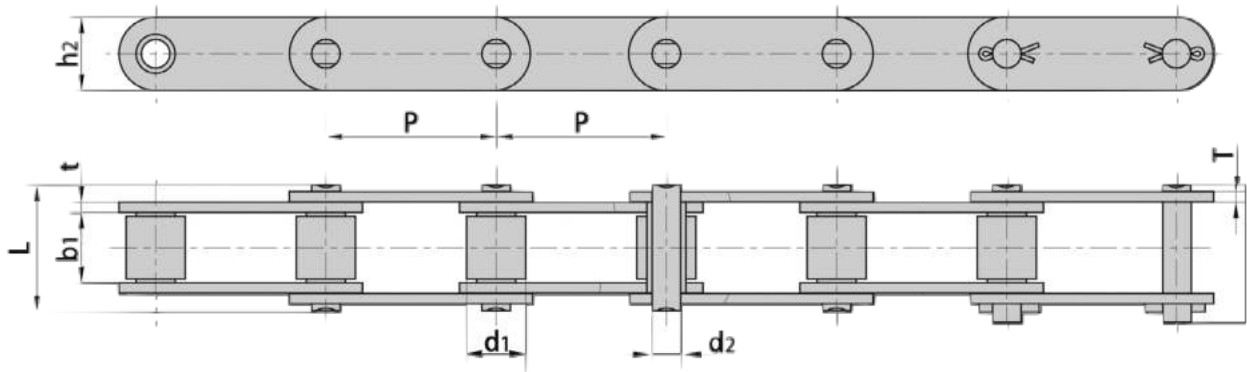


Chain	Pitch mm	Pitch inch	b1	d1	d2	h2	T	U.T.S KN	A.T.S KN
SS131	78.10	3	31.7	32.5	15.88	39.6	9.7	160	192.00
SS188	66.27	2.6	25.6	22.4	12.70	30.0	6.4	102	122.40
SS110	152.4	6	54	31.75	15.875	38.1	9.65	-	-
SS102B	101.60	4	50.80	25.4	15.88	38.1	9.53	-	-

BL Series Leaf Chain

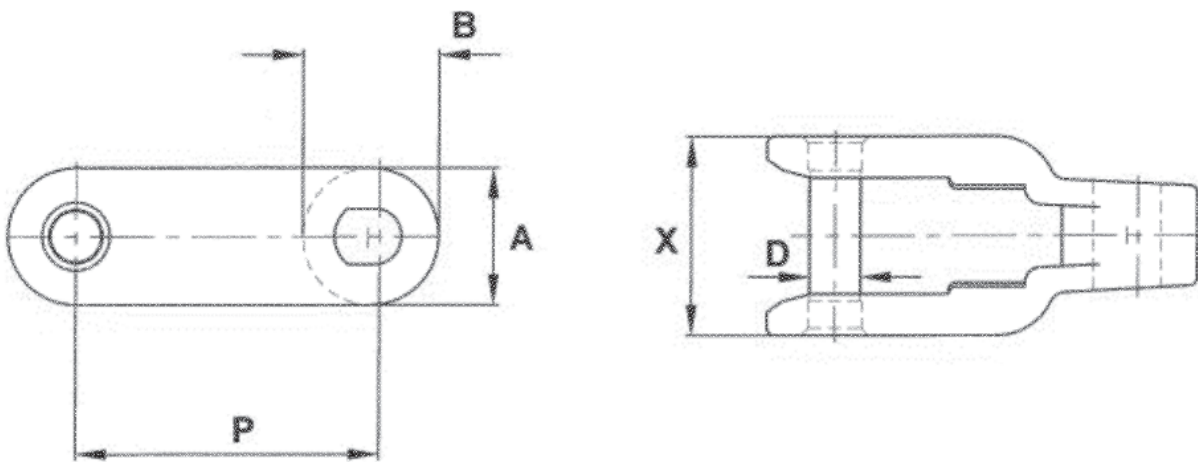


Chain	Pitch	Lacing	h2	T	d2	L	Min. TS KN	ATS KN	Kg/ft
BL523	15.88	2x3	15.09	2.44	5.96	17.42	33.4	43.10	0.36
BL534	15.88	3x4	15.09	2.44	5.96	20.20	48.9	63.6	0.49
BL623	19.05	2x3	18.11	3.3	7.94	22.2	48.9	63.6	0.60
BL634	19.05	3x4	18.11	3.30	7.94	27.43	75.6	102.6	0.76
BL646	19.05	4x6	18.11	3.3	7.94	37.67	97.9	120.9	1.20
BL822	25.40	2x2	24.13	4.09	9.54	23.41	84.5	108.2	0.74
BL823	25.4	2x3	24.13	4.09	9.54	25.48	84.5	108.2	0.90
BL834	25.40	3x4	24.13	4.09	9.54	33.76	129.0	143.6	1.15
BL846	25.40	4x6	24.13	4.09	9.54	48.35	169.0	214.6	1.80
BL866	25.41	6x6	24.13	-	-	-	-	-	-



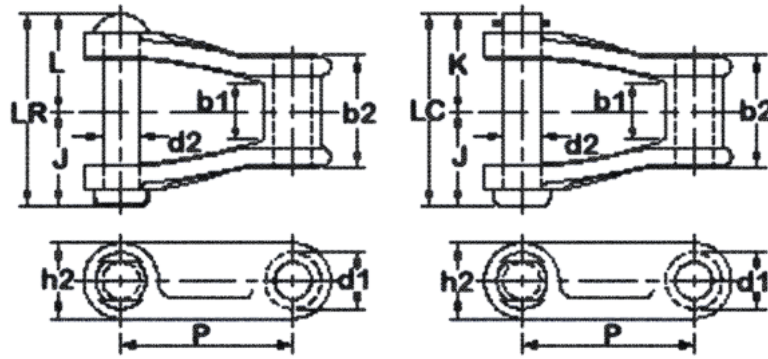
Chain	Pitch	b1	d1	h2	t	T	d2	L	U.T.S KN	A.T.S KN	Kg/ft
81X	66.27	26.99	23.02	28.6	4.0	4.0	11.1	49.0	106.70	128.04	1.11
81XH	66.27	26.99	23.02	31.4	7.5	5.6	11.1	59.2	152.00	182.40	1.70
81XHH	66.27	26.99	23.02	31.4	7.5	7.5	11.1	66.3	186.7	205	2.09

Milk Crate Chain



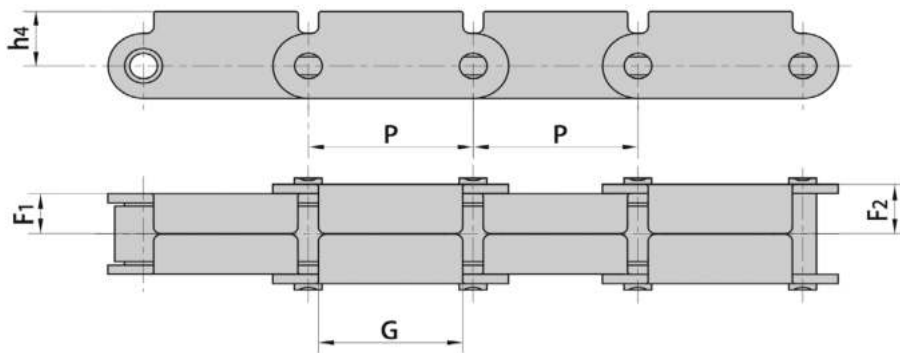
Chain	Pitch	X	D	B	A	Max. Load Lbs	U.T.S Lbs	App. Kg/ft
CC600	64	43	11	13	29	1,850	3,400	0.6

Pintle Chain "H"



Chain	Pitch mm	Pitch inch	b1	Lr	Lc	h2	d1	J	K	L	b2	App. Kg/ft
H78	66.26	2.609	28.57	80.94	84.12	28.57	22.22	39.67	41.27	41.27	47.62	1.91

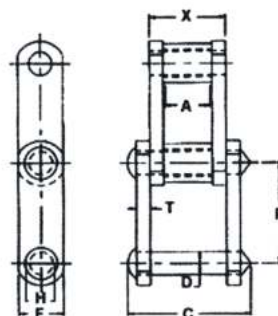
Roof Top Chain



Chain	Pitch	F1	F2	G	h4
81XRT	66.27	17.5	21.8	56.0	25.4

Combination Chain

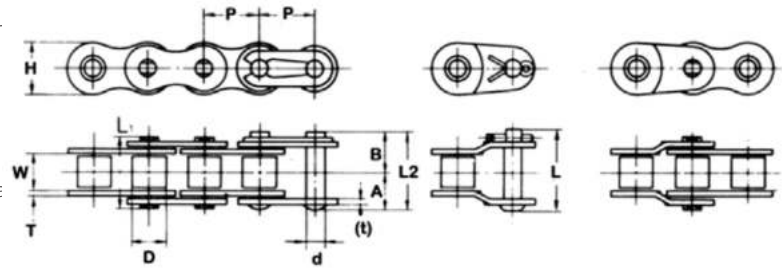
Chain	Pitch	A	C	D	E	F	H	T	X	App. Kg/ft	Maximum working load (Aprox. kg)
C55	41.43	17.45	52.37	9.53	49.99	19.05	18.24	4.75	31.75	0.91	635.09
C188	66.27	23.80	68.25	12.70	63.50	28.58	22.23	6.35	39.67	1.58	1067
C102B	101.60	50.80	115.87	15.88	111.13	38.10	24.59	9.53	73.81	2.90	2449.40
C131	78.105	28.448	95.25	-	-	-	-	-	-	-	1759.94



Finer Power Transmissions stocks a range of economy Stainless Steel chain in British Standard, American Standard and Double Pitch.

This economy range of Stainless Steel chain offers a cost saving alternative to more expensive brands.

Using SUS304 grade stainless steel in its construction, this chain is food grade quality.

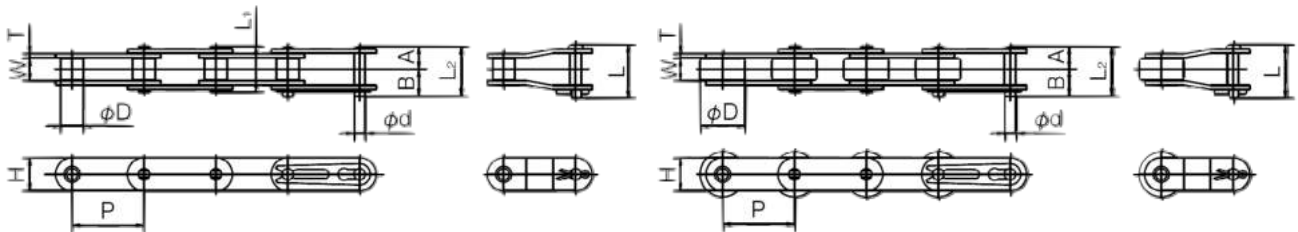


BS Stainless Steel Chain

Chain	Pitch (P)	Inner Width (W)	Roller Dia. (D)	Pin						Offset		App. Kg/ft	Links Of 1 Unit
				Dia. (d)	A	B	(A+A) L1	(A+B) L2	Offset (L)	Thickness T(t)	Height (H)		
08B-1SS	12.70	7.75	8.51	4.45	8.17	9.58	16.35	17.75	19.30	1.5	11.7	0.2	240
10B-1SS	15.875	9.65	10.16	5.08	9.58	11.02	19.15	20.60	21.95	1.65	14.6	0.29	192
12B-1SS	19.05	11.68	12.07	5.72	11.05	12.55	22.10	23.60	26.30	1.8	16.0	0.38	160

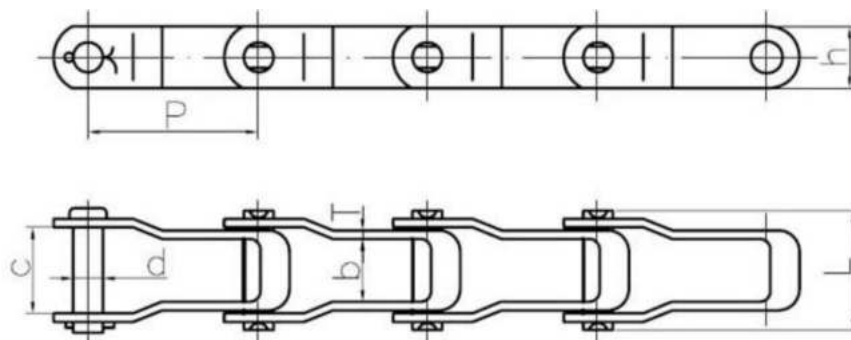
ANSI Stainless Steel Chain

Chain	Pitch (P)	Inner Width (W)	Roller Dia. (D)	Pin						Offset		App. Kg/ft	Links Of 1 Unit
				Dia. (d)	A	B	(A+A) L1	(A+B) L2	Offset (L)	Thickness (T)	Height (H)		
40-1SS	12.70	7.95	7.95	3.97	8.07	9.48	16.15	17.55	19.05	1.5	11.7	0.19	240
50-1SS	15.875	9.53	10.16	5.09	10.17	11.63	20.35	21.80	23.05	2.0	14.6	0.32	192
50-2SS	15.875	9.53	10.16	5.09	19.22	20.68	38.45	39.90	41.15	2.0	14.6	0.67	192
60-1SS	19.05	12.70	11.91	5.96	12.7	14.2	25.40	26.90	29.55	2.4	17.5	0.46	160



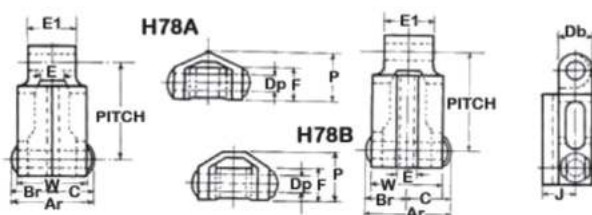
Double Pitch (Conveyor) Stainless Steel Chain

Chain	Pitch (P)	Inner Width (W)	Roller Dia. (D)	Pin						Offset		App. Kg/ft	Links Of 1 Unit
				Dia. (d)	A	B	(A+A) L1	(A+B) L2	Offset (L)	Thickness (T)	Height (H)		
C2040SS	25.40	7.95	7.95	3.97	8.07	10.28	16.15	18.35	19.05	1.5	11.7	0.15	120
C2042SS			15.88									.25	
C2050SS	31.75	9.53	10.16	5.09	10.17	12.13	20.35	22.30	23.05	2.0	14.6	.25	96
C2052SS			19.05									.39	
C2060HSS	38.10	12.70	11.91	5.96	14.35	17.05	28.76	31.40	32.85	3.2	17.5	.45	80
C2062HSS			22.23									.65	
C2080HSS	50.80	15.88	15.88	7.94	17.80	20.90	35.60	38.70	40.40	4.0	23.0	.63	60
C2082HSS			28.58									0.95	



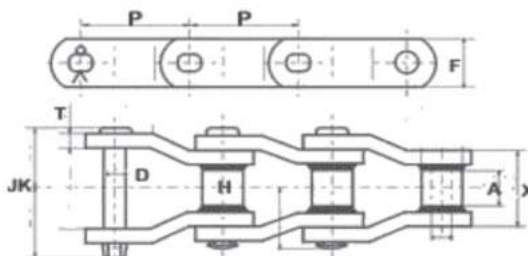
Chain	Pitch	c	b	h	T	d	L	U.T.S KN	A.T.S KN	Kg/ft
662K	42.27	30.50	23.20	18.30	3.2	7.16	41.3	37.80	45.360	0.49
667K	57.15	39.20	27.80	26.80	5.1	11.10	55.5	88.90	106.68	1.10
88K	66.27	39.20	27.80	26.80	5.1	11.10	55.55	88.90	106.68	1.08

Timber Transfer Chain



Chain	Pitch mm	Pitch inch	Ar	Br	C	Db	Dp	E	E1	F	J	P	W	Rated Working Load Lbs	A.T.S Lbs	App Kg/ft
H78A	66.26	2.609	95.25	41.27	39.67	22.22	12.7	28.57	47.62	25.4	28.57	42.84	71.42	2,820	20,800	2.31
H78B																

Welded WH Chain



Chain	Pitch mm	Pitch inch	JK	X	D	T	F	H	A	Rated Working Load Lbs	A.T.S Lbs	App Kg/ft
WH78	66.27	2 1/2"	76.20	50.80	12.70	6.35	28.57	22.22	28.57	3,000	28,700	1.82
WH132	153.67	6"	158.75	111.12	25.40	12.75	50.80	44.45	73.02	15,300	111,000	6.46

Chain Quick Reference Chart

Chain Number	Pitch Inch	Pitch mm	Roller Diameter mm	Roller Width mm	Inner Plate Thickness mm
25-1	0.25	6.35	3.302	3.175	0.76
25-2	0.25	6.35	3.302	3.175	0.76
25-1SS	0.25	6.35	3.302	3.175	0.76
05B-1	0.312	8	5	3	1.3
05B-2	0.312	8	5	3	1.3
05B-1SS	0.312	8	5	3	1.3
05B-1N	0.312	8	5	3	1.3
35-1	0.375	9.525	5.08	4.763	1.27
35-2	0.375	9.525	5.08	4.763	1.27
35-3	0.375	9.525	5.08	4.763	1.27
35-1N	0.375	9.525	5.08	4.763	1.27
35-1SS	0.375	9.525	5.08	4.763	1.27
06B-1	0.375	9.525	6.35	5.72	1.4
06B-2	0.375	9.525	6.35	5.72	1.4
06B-3	0.375	9.525	6.35	5.72	1.4
06B-1N	0.375	9.525	6.35	5.72	1.4
06B-1SS	0.375	9.525	6.35	5.72	1.4
40-1	0.5	12.7	7.925	7.938	1.52
40-2	0.5	12.7	7.925	7.938	1.52
40-3	0.5	12.7	7.925	7.938	1.52
40HP	0.5	12.7	7.925	7.938	1.52
40SB	0.5	12.7	7.925	7.938	1.52
40SL	0.5	12.7	7.925	7.938	1.52
40N	0.5	12.7	7.925	7.938	1.52
40-1SS	0.5	12.7	7.925	7.938	1.52
40-2SS	0.5	12.7	7.925	7.938	1.52
40H	0.5	12.7	7.925	7.938	2
40AQUA	0.5	12.7	7.925	7.938	1.52
40NEO	0.5	12.7	7.925	7.938	1.52
08B-1	0.5	12.7	8.51	7.75	1.5
08B-2	0.5	12.7	8.51	7.75	1.5
08B-3	0.5	12.7	8.51	7.75	1.5
08B-1N	0.5	12.7	8.51	7.75	1.5
08B-1SS	0.5	12.7	8.51	7.75	1.5
08B-2SS	0.5	12.7	8.51	7.75	1.5
08B-1AQUA	0.5	12.7	8.51	7.75	1.5
08B-2AQUA	0.5	12.7	8.51	7.75	1.5
08B-1NEO	0.5	12.7	8.51	7.75	1.5
08B-2NEO	0.5	12.7	8.51	7.75	1.5
41-1	0.5	12.7	7.75	6.35	1.27
410	0.5	12.7	7.75	3.17	1
415	0.5	12.7	7.75	4.75	1.1
415S	0.5	12.7	7.75	4.75	1.5
420	0.5	12.7	7.75	6.35	1.5
428	0.5	12.7	8.51	7.92	1.5

Chain Quick Reference Chart

Chain Number	Pitch Inch	Pitch mm	Roller Diameter. mm	Roller Width mm	Inner Plate Thickness mm
428H	0.5	12.7	8.51	7.92	2
BL434	0.5	12.7	-	-	2
BL466	0.5	12.7	-	-	2
50-1	0.625	15.88	10.16	9.53	2.03
50-2	0.625	15.88	10.16	9.53	2.03
50-3	0.625	15.88	10.16	9.53	2.03
50F	0.625	15.88	10.16	9.53	2.03
50HE	0.625	15.88	10.16	9.53	2.4
50HP	0.625	15.88	10.16	9.53	2.03
50SB	0.625	15.88	10.16	9.53	2.03
50SL	0.625	15.88	10.16	9.53	2.03
50-1SS	0.625	15.88	10.16	9.53	2.03
50-2SS	0.625	15.88	10.16	9.53	2.03
50H	0.625	15.88	10.16	9.53	2.4
50N	0.625	15.88	10.16	9.53	2.03
50-1AQUA	0.625	15.88	10.16	9.53	2.03
50-2AQUA	0.625	15.88	10.16	9.53	2.03
50-1NEO	0.625	15.88	10.16	9.53	2.03
50-2NEO	0.625	15.88	10.16	9.53	2.03
520	0.625	15.88	10.16	6.35	2
520H	0.625	15.88	10.16	6.35	2.4
530	0.625	15.88	10.16	9.53	2.03
530H	0.625	15.88	10.16	9.53	2.4
10B-1	0.625	15.88	10.16	9.65	1.6
10B-2	0.625	15.88	10.16	9.65	1.6
10B-3	0.625	15.88	10.16	9.65	1.6
10B-1N	0.625	15.88	10.16	9.65	1.6
10B-1SS	0.625	15.88	10.16	9.65	1.6
10B-1AQUA	0.625	15.88	10.16	9.65	1.6
10B-2AQUA	0.625	15.88	10.16	9.65	1.6
10B-1NEO	0.625	15.88	10.16	9.65	1.6
10B-2NEO	0.625	15.88	10.16	9.65	1.6
BL523	0.625	15.88	-	-	2.4
BL532	0.625	15.88	-	-	2.4
BL534	0.625	15.88	-	-	2.4
AL544	0.625	15.88	-	-	2
BL546	0.625	15.88	-	-	2.4
AL566	0.625	15.88	-	-	2
BL566	0.625	15.88	-	-	2.4
630H	0.75	19.05	11.91	9.53	3.2
60-1	0.75	19.05	11.91	12.7	2.4
60-2	0.75	19.05	11.91	12.7	2.4
60-3	0.75	19.05	11.91	12.7	2.4
60-4	0.75	19.05	11.91	12.7	2.4
60F	0.75	19.05	11.91	12.7	2.4

Chain Quick Reference Chart

Chain Number	Pitch Inch	Pitch mm	Roller Diameter. mm	Roller Width mm	Inner Plate Thickness mm
60HE	0.75	19.05	11.91	12.7	3.2
60HP	0.75	19.05	11.91	12.7	2.4
60SL	0.75	19.05	11.91	12.7	2.4
60H	0.75	19.05	11.91	12.7	3.2
60-1SS	0.75	19.05	11.91	12.7	2.4
60-2SS	0.75	19.05	11.91	12.7	2.4
60N	0.75	19.05	11.91	12.7	2.4
60-1AQUA	0.75	19.05	11.91	12.7	2.4
60-2AQUA	0.75	19.05	11.91	12.7	2.4
60-1NEO	0.75	19.05	11.91	12.7	2.4
60-2NEO	0.75	19.05	11.91	12.7	2.4
12B-1	0.75	19.05	12.07	11.68	2
12B-2	0.75	19.05	12.07	11.68	2
12B-3	0.75	19.05	12.07	11.68	2
12B-1N	0.75	19.05	12.07	11.68	2
12B-1SS	0.75	19.05	12.07	11.68	2
12B-2SS	0.75	19.05	12.07	11.68	2
12B-1AQUA	0.75	19.05	12.07	11.68	2
12B-2AQUA	0.75	19.05	12.07	11.68	2
12B-1NEO	0.75	19.05	12.07	11.68	2
12B-2NEO	0.75	19.05	12.07	11.68	2
12B-3NEO	0.75	19.05	12.07	11.68	2
BL623	0.75	19.05	-	-	3.2
BL634	0.75	19.05	-	-	3.2
AL644	0.75	19.05	-	-	2.4
BL644	0.75	19.05	-	-	3.2
BL646	0.75	19.05	-	-	3.2
AL666	0.75	19.05	-	-	2.4
AL688	0.75	19.05	-	-	2.4
S25 DET	0.9	22.96	-	-	-
A2040	1	25.4	7.92	7.92	1.52
C2040	1	25.4	7.92	7.92	1.52
C2040HP	1	25.4	7.92	7.92	1.52
C2040SS	1	25.4	7.92	7.92	1.52
C2040NEO	1	25.4	7.92	7.92	1.52
208B	1	25.4	8.51	7.75	-
80F	1	25.4	15.88	15.88	3.2
80HE	1	25.4	15.88	15.88	4
80H	1	25.4	15.88	15.88	4
80H-SUPER	1	25.4	15.88	15.88	4
80-1	1	25.4	15.88	15.88	3.2
80-2	1	25.4	15.88	15.88	3.2
80-3	1	25.4	15.88	15.88	3.2
80-4	1	25.4	15.88	15.88	3.2
80N	1	25.4	15.88	15.88	3.2

Chain Quick Reference Chart

Chain Number	Pitch Inch	Pitch mm	Roller Diameter. mm	Roller Width mm	Inner Plate Thickness mm
80-1SS	1	25.4	15.88	15.88	3.2
80HP	1	25.4	15.88	15.88	3.2
80-1AQUA	1	25.4	15.88	15.88	3.2
80-1NEO	1	25.4	15.88	15.88	3.2
16B-1	1	25.4	15.88	17.02	3.2/4
16B-2	1	25.4	15.88	17.02	3.2/4
16B-3	1	25.4	15.88	17.02	3.2/4
16B-1SS	1	25.4	15.88	17.02	3.2/4
16B-1N	1	25.4	15.88	17.02	3.2/4
16B-1AQUA	1	25.4	15.88	17.02	3.2/4
16B-2AQUA	1	25.4	15.88	17.02	3.2/4
16B-1NEO	1	25.4	15.88	17.02	3.2/4
16B-2NEO	1	25.4	15.88	17.02	3.2/4
C2042	1	25.4	15.88	7.92	1.52
C2042HP	1	25.4	15.88	7.92	1.52
C2042N	1	25.4	15.88	7.92	1.52
C2042SS	1	25.4	15.88	7.92	1.52
BL823	1	25.4	-	-	4
BL834	1	25.4	-	-	4
AL844	1	25.4	-	-	3.2
BL844	1	25.4	-	-	4
BL846	1	25.4	-	-	4
AL866	1	25.4	-	-	3.2
BL866	1	25.4	-	-	4
S32	1.15	29.21	11.43	15.88	-
S32 DET	1.16	29.39	-	-	-
S51 DET	1.13	28.78	-	-	-
A2050	1.25	31.75	10.16	9.53	2.03
C2050	1.25	31.75	10.16	9.53	2.03
C2050HP	1.25	31.75	10.16	9.53	2.03
C2050N	1.25	31.75	10.16	9.53	2.03
C2050SS	1.25	31.75	10.16	9.53	2.03
C2050NEO	1.25	31.75	10.16	9.53	2.03
100-1	1.25	31.75	19.05	19.05	3.96
100-2	1.25	31.75	19.05	19.05	3.96
100-3	1.25	31.75	19.05	19.05	3.96
100HE	1.25	31.75	19.05	19.05	4.75
100H	1.25	31.75	19.05	19.05	4.75
100H-SUPER	1.25	31.75	19.05	19.05	4.75
100-1AQUA	1.25	31.75	19.05	19.05	3.96
100-1NEO	1.25	31.75	19.05	19.05	3.96
20B-1	1.25	31.75	19.56	19.05	4.7
20B-2	1.25	31.75	19.56	19.05	4.7
20B-3	1.25	31.75	19.56	19.05	4.7
20B-1AQUA	1.25	31.75	19.56	19.05	4.7

Chain Quick Reference Chart

Chain Number	Pitch Inch	Pitch mm	Roller Diameter. mm	Roller Width mm	Inner Plate Thickness mm
20B-1NEO	1.25	31.75	19.56	19.05	4.7
C2052	1.25	31.75	19.05	9.53	2.03
C2052HP	1.25	31.75	19.05	9.53	2.03
C2052SS	1.25	31.75	19.05	9.53	2.03
BL1034	1.25	31.75	-	-	4.8
BL1046	1.25	31.75	-	-	4.8
BL1066	1.25	31.75	-	-	4.8
A2060	1.5	38.1	11.91	12.7	2.39
C2060H	1.5	38.1	11.91	12.7	3.18
C2060HP	1.5	38.1	11.91	12.7	3.18
C2060HN	1.5	38.1	11.91	12.7	3.18
C2060HSS	1.5	38.1	11.91	12.7	3.18
C2060HNEO	1.5	38.1	11.91	12.7	3.18
C2060HAQUA	1.5	38.1	11.91	12.7	3.18
120-1	1.5	38.1	22.23	25.4	4.75
120-2	1.5	38.1	22.23	25.4	4.75
120-3	1.5	38.1	22.23	25.4	4.75
120HE	1.5	38.1	22.23	25.4	5.56
120H	1.5	38.1	22.23	25.4	5.56
120-1N	1.5	38.1	22.23	25.4	4.75
24B-1	1.5	38.1	25.4	25.4	6.3
24B-2	1.5	38.1	25.4	25.4	6.3
24B-3	1.5	38.1	25.4	25.4	6.3
C2062HP	1.5	38.1	22.23	12.7	3.18
C2062H	1.5	38.1	22.23	12.7	3.18
C2062HSS	1.5	38.1	22.23	12.7	3.18
C2062HN	1.5	38.1	22.23	12.7	3.18
C2062HNEO	1.5	38.1	22.23	12.7	3.18
C2062HAQUA	1.5	38.1	22.23	12.7	3.18
212B	1.5	38.1	12.07	11.68	-
BL1234	1.5	38.1	-	-	5.6
BL1246	1.5	38.1	-	-	5.6
S52	1.5	38.1	15.24	22.23	-
S52 DET	1.5	38.1	-	-	-
CA550	1.6	41.4	16.66	20.4	2.6
CA557	1.6	41.4	17.78	20.4	3.1
C55	1.6	41.43	18.24	17.45	4.75
S55	1.6	41.43	17.78	22.23	-
S62	1.65	41.91	19.05	25.4	-
662	1.66	42.27	-	-	3.2
S62 DET	1.65	42.01	-	-	-
140-1	1.75	44.45	25.4	25.4	5.56
140-2	1.75	44.45	25.4	25.4	5.56
140-3	1.75	44.45	25.4	25.4	5.56
140H-1	1.75	44.45	25.4	25.4	6.35

Chain Quick Reference Chart

Chain Number	Pitch Inch	Pitch mm	Roller Diameter. mm	Roller Width mm	Inner Plate Thickness mm
140H-2	1.75	44.45	25.4	25.4	6.35
140HE	1.75	44.45	25.4	25.4	6.35
140DC	1.75	44.45	25.4	25.4	6.35
28B-1	1.75	44.45	30.99	27.94	7.8
28B-2	1.75	44.45	30.99	27.94	7.8
28B-3	1.75	44.45	30.99	27.94	7.8
C2080H	2	50.8	15.88	15.88	3.96
C2080HSS	2	50.8	15.88	15.88	3.96
C2080N	2	50.8	15.88	15.88	3.96
C2080HP	2	50.8	15.88	15.88	3.96
C2080HNEO	2	50.8	15.88	15.88	3.96
160-1	2	50.8	28.58	31.75	6.35
160-2	2	50.8	28.58	31.75	6.35
160-3	2	50.8	28.58	31.75	6.35
160H	2	50.8	28.58	31.75	7.14
160HE	2	50.8	28.58	31.75	7.14
32B-1	2	50.8	30.99	29.21	7.3
32B-2	2	50.8	30.99	29.21	7.3
32B-3	2	50.8	30.99	29.21	7.3
C2082H	2	50.8	28.58	15.88	3.96
C2082HN	2	50.8	28.58	15.88	3.96
C2082HSS	2	50.8	28.58	15.88	3.96
C2082HP	2	50.8	28.58	15.88	3.96
180-1	2.25	57.15	35.71	35.71	7.13
180H	2.25	57.15	35.71	35.71	7.9
180DC	2.25	57.15	35.71	35.71	7.13
667K	2.25	57.15	-	-	5.1
C2100H	2.5	63.5	19.05	19.05	4.75
200-1	2.5	63.5	39.97	38.1	7.93
81X	2.6	66.27	23.01	17.46	3.97
81X Rooftop	2.6	66.27	23.01	17.46	3.97
81XH	2.6	66.27	23.01	17.46	7.93
H78	2.6	66.27	22.22	-	-
H78A	2.6	66.27	-	-	-
H78B	2.6	66.27	-	-	-
WH78	2.6	66.27	31.75	25.4	6.35
C188	2.6	66.27	22.23	23.8	6.35
SS188	2.6	66.27	22.23	25.6	6.35
88K	2.6	66.27	-	-	5.1
C2120H	3	76.2	22.23	25.4	5.56
C2122H	3	76.2	44.5	25.4	5.56
SS131	3.01	78.1	32.5	31.7	9.7
C102B	4	101.6	24.59	50.8	9.53
WD110	6	152.4	-	-	9.52
WH132	6	152.4	-	-	12.75