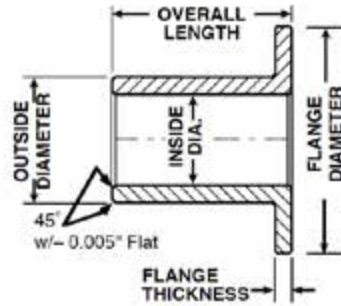


Imperial Flanged



Part No.	Inside Diameter		Outside Diameter		Length	Flange	
	NOM.	ACT.	NOM.	ACT.		DIAM.	Thickness
F0510-1	5/32"	0.157"	5/16"	0.314"	3/8"	7/16"	1/16"
F0610-1	3/16"	0.189"	5/16"	0.314"	5/16"	1/2"	1/16"
F0610-2	3/16"	0.189"	5/16"	0.314"	3/8"	7/16"	1/16"
F0812-2	1/4"	0.252"	3/8"	0.377"	7/16"	9/16"	1/16"
F1014-1	5/16"	0.314"	7/16"	0.440"	3/8"	5/8"	1-1/16"
F1014-2	5/16"	0.314"	7/16"	0.440"	1/2"	5/8"	1/8"
F1014-5	5/16"	0.314"	7/16"	0.440"	3/4"	5/8"	1/16"
F1016-5	5/16"	0.314"	1/2"	0.5035"	3/4"	3/4"	1/8"
F1216-1	3/8"	0.377"	1/2"	0.503"	1/2"	11/16"	1/8"
F1220-2	3/8"	0.3775"	5/8"	0.6275"	15/16"	3/4"	3/32"
F1220-3	3/8"	0.3775"	5/8"	0.6275"	1/2"	3/4"	3/32"
F1620-2	1/2"	0.502"	5/8"	0.628"	5/8"	7/8"	1/16"
F1620-1	1/2"	0.502"	5/8"	0.628"	3/4"	7/8"	3/32"
F1620-5	1/2"	0.502"	5/8"	0.628"	1"	7/8"	3/32"
F1620-3	1/2"	0.502"	5/8"	0.628"	13/16"	25/32"	1/16"
F1620-4	1/2"	0.502"	5/8"	0.628"	1"	1"	3/32"
F1624-1	1/2"	0.502"	3/4"	0.752"	3/4"	1"	1/8"
F1624-2	1/2"	0.502"	3/4"	0.752"	1"	1"	1/8"
F2024-2	5/8"	0.628"	3/4"	0.753"	3/4"	1"	1/8"
F2024-1	5/8"	0.628"	3/4"	0.753"	1"	1"	1/8"
F2028-2	5/8"	0.628"	7/8"	0.878"	1-1/4"	1-1/16"	1/8"
F2428-1	3/4"	0.7552"	7/8"	0.8765"	7/8"	11/16"	1/16"
F2430-1	3/4"	0.752"	15/16"	0.940"	1-3/8"	1-1/4"	1/8"
F2432-1	3/4"	0.752"	1"	1.002"	3/4"	1-1/4"	1/8"
F2432-3	3/4"	0.752"	1"	1.002"	1"	1-1/4"	1/8"
F2836-1	7/8"	0.878"	1-1/8"	1.128"	1-7/16"	1-3/8"	1/8"
F3038-1	15/16"	0.9395"	1-3/16"	1.1895"	1"	1-3/8"	1/8"
F3240-2	1"	1.003"	1-1/4"	1.254"	1-1/2"	1-1/2"	1/8"
F3240-3	1"	1.003"	1-1/4"	1.254"	1-1/4"	1-1/2"	1/8"
F4048-1	1-1/4"	1.254"	1-1/2"	1.504"	1-1/4"	1-11/16"	3/32"