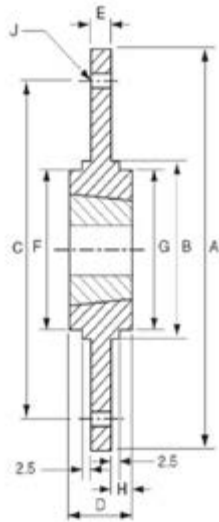


Taper Lock Bolt On Hubs are designed for use with Taper Lock Bushes. They provide a convenient means of securing impellers, agitators, fan motors and other devices firmly to shafts. Bolt On Hubs are used wherever welding is not possible or not permitted. Parts can be mounted to either the left or right hand side of the hub.



Part Number	T/L Bush	A	B	C	D	E	R	G	H	J (No. x Diameter)
BF12	1210	120	80	100	25	6.5	74	80	10	6 x 6.5
BF16	1610	130	90	110	25	6.5	84	90	10	6 x 6.5
BF20	2012	145	100	125	32	8.5	99	100	13	6 x 8.5
BF25	2517	185	130	155	44	11.5	120	119	20	6 x 10.5
BF30	3020	220	165	190	50	11.5	146	147	20	6 x 13