

KCP Gear Couplings

8. Selection on Puller Holes

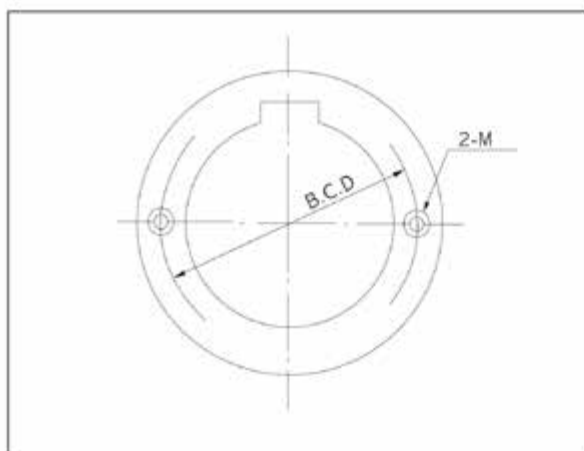


Table 4

Table 4

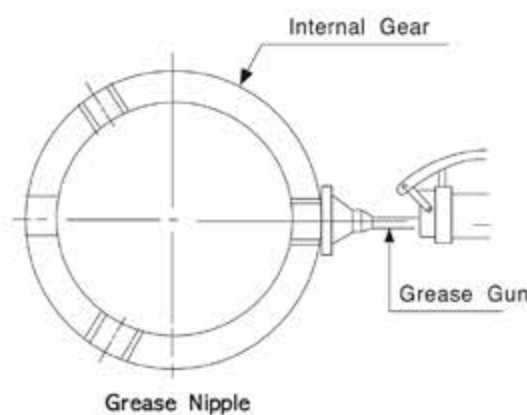
Size	BCD	Tap Size
20KG	89	M8
25KG	112	M10
30KG	128	M10
35KG	152	M12
40KG	181	M16
45KG	200	M16
50KG	216	M20
55KG	238	M20
60KG	268	M20
70KG	305	M24
80KG	318	M24
90KG	356	M30
100KG	394	M30
110KG	426	M30
120KG	498	M30

9. Lubrication & Handling

With the appropriate lubricant information, the coupling will have good performance and long life.

1. Lubricant

- Grease the Internal gear teeth and crown gear teeth, and fill enough lubricant Grease.
- Supplement and Replacement:
Add grease every month or every 240-250 hours operating.
Renew all the contaminated grease every 3 month or every 4000 hours operating
- Selection
Allowable temperature of grease is from 17°C to 70°C. Refer to the table 6 (pg. 3.1.37) that shows the coupling RPM allowed fix the listed grease.



Company/Oil	Grease # 1	Grease # 0
Gulf Oil Corp.	Gulfcrown Grease EP #1	Gulfcrown Grease EP #0
Shell Oil Corp.	Alvania Grease EP #1	Alvania Grease EP-RO
Texaco Inc.	Multifak EP - 1	Multifak EP - 0
Mobil Oil Corp.	Mobilux EP - 1	Mobilux EP - 0

Note: Lubricants listed in this manual are typical products.