

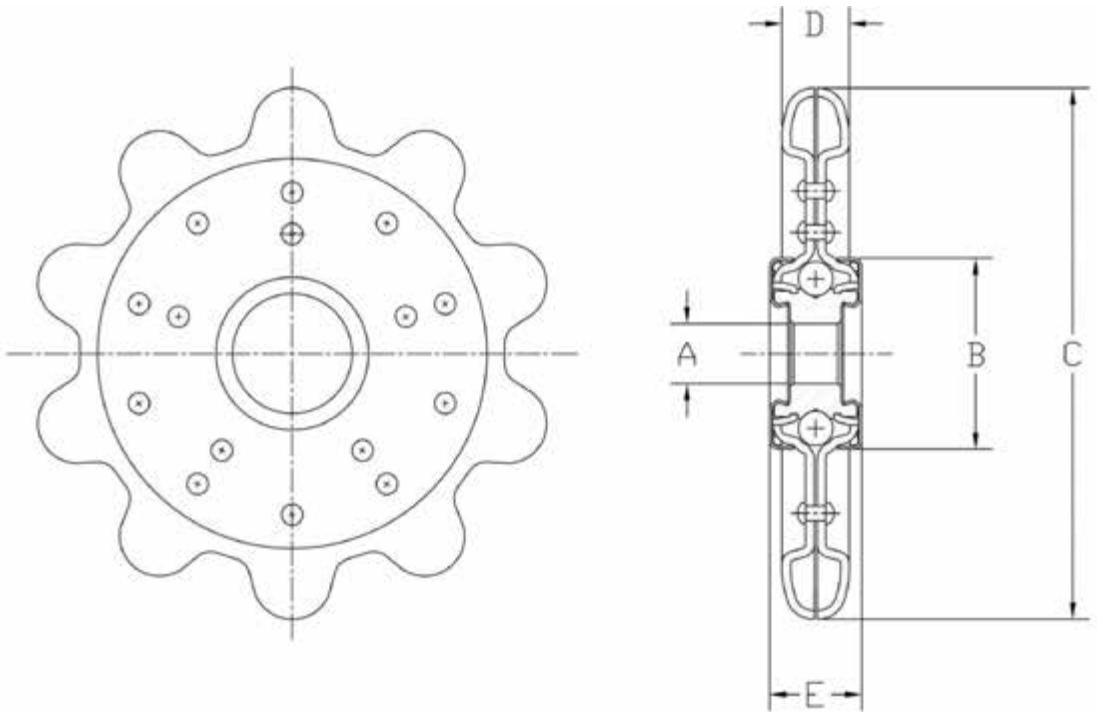
Sprocket Idlers

These sprocket idlers are designed for agricultural detachable link chain. They are installed with standard 1/2" or 5/8" bolts, and (one or the other) include accurately contoured hardened teeth to resist wear and damage to the chain. Aetna idlers are compact, easy to install and built for a long maintenance-free service life.

ADVANTAGES

- Case hardened teeth prolong chain and idler life. Accurately contoured teeth from heavy gauge steel
- Over-size, factory packed lubricant chamber assures maximum life and operating efficiency without troublesome relubrication
- Bearing races are hardened to resist wear, outers and inners are accurately formed for smooth running
- Aetna's self-contouring, free running, self-wiping seal provides positive contact under all conditions of misalignment
- Full ball complement for high durability

Detachable Chain Idlers



PART NO.	UNIT	CHAIN NO	PITCH	ROLLER DIA	TEETH	A	B	C	D	E	WEIGHT (LBS / kg)
AG2422	Inch	62,62H	1.654	.670 / .686	7	.643 / .649	1-13/32	4-29/64	3/4	29/32	1.43
	mm			17.018 / 17.242		16.332 / 16.484	35.718	113.109	19.05	23.018	.6486
AG2422-1AF	Inch	62,62H	1.654	.670 / .686	7	.643 / .649	1-13/32	4-29/64	3/4	29/32	1.43
	mm			17.018 / 17.242		16.332 / 16.484	35.718	113.109	19.05	23.018	.6486

*Includes Felt & Slinger Seals

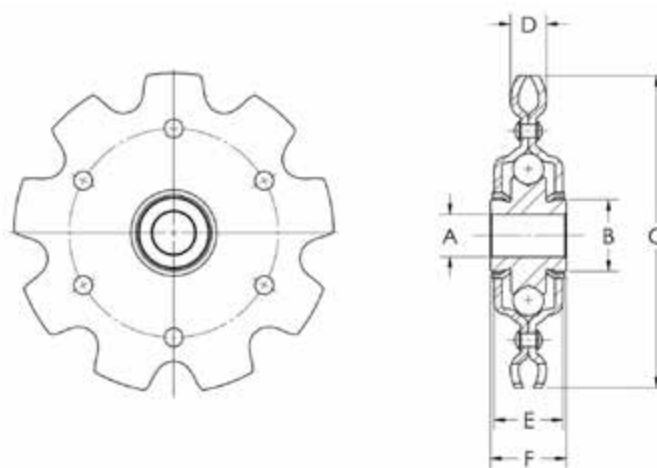
Sprocket Idlers

These sprocket idlers are designed for extended pitch chain. They are installed with standard 1/2" or 5/8" bolts, and (one or the other) include accurately contoured hardened teeth to resist wear and damage to the chain. Aetna idlers are compact and easy to install and built for a long maintenance-free service life. Typical applications include gathering chains on corn heads and other harvesting equipment.

ADVANTAGES

- Case hardened teeth prolong chain and idler life. Accurately contoured teeth from heavy gauge steel
- Over-size, factory packed lubricant chamber assures maximum life and operating efficiency without troublesome relubrication
- Bearing races are hardened to resist wear, outers and inners are accurately formed for smooth running
- Aetna's self-contouring, free running, self-wiping seal provides positive contact under all conditions of misalignment
- Full ball complement for high durability

Double Pitch Chain Idlers



PART NO.	UNIT	CHAIN NO	PITCH	ROLLER DIA	TEETH	A	B	C	D	E	F	WEIGHT (LBS / kg)
AG2416-B	Inch	2050	1-1/4	.400	9	.643 / .649	7/8	3-27/32	11/32	51/64	.927	.75
	mm		31.75	10.16		16.332/16.484	22.225	97.631	8.731	20.240	23.545	.340

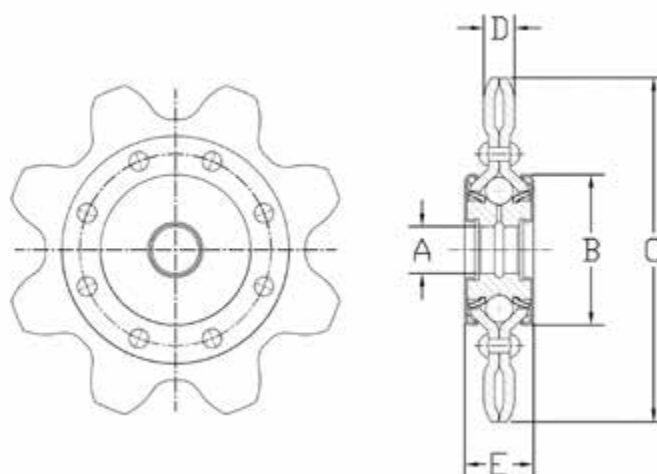
Sprocket Idlers

These sprocket idlers are designed for extended pitch chain. These Aetna idlers are manufactured with heavier gauge steel for greater life and load carrying capacity. They are installed with standard 1/2" or 5/8" bolts, and (one or the other) include accurately contoured hardened teeth to resist wear and damage to the chain. Aetna idlers are compact and easy to install and built for a long maintenance-free service life. Typical applications include gathering chains on corn heads and other harvesting equipment.

ADVANTAGES

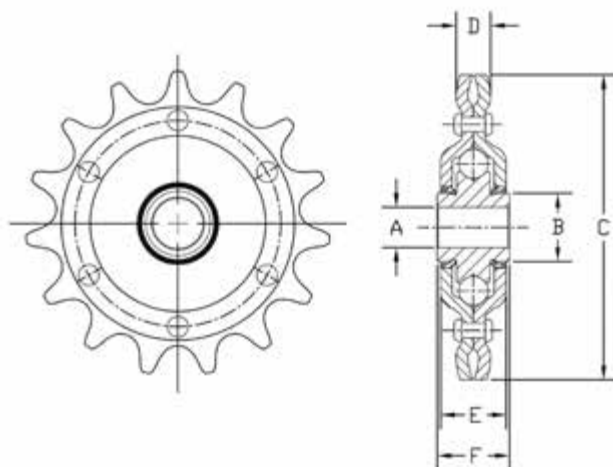
- Case hardened teeth prolong chain and idler life. Accurately contoured teeth from heavy gauge steel
- Over-size, factory packed lubricant chamber assures maximum life and operating efficiency without troublesome relubrication
- Bearing races are hardened to resist wear, outers and inners are accurately formed for smooth running
- Aetna's self-contouring, free running, self-wiping seal provides positive contact under all conditions of misalignment
- Full ball complement for high durability

Heavy Duty Double Pitch Chain Idlers



PART NO.	UNIT	CHAIN NO	PITCH	ROLLER DIA	TEETH	A	B	C	D	E	WEIGHT (LBS / kg)
AG2427	Inch	2060	1-1/2	15/32	8	.643/.649	7/8	4-7/32	7/16	.927	1.13
	mm		38.1	11.906		16.332/16.484	22.225	107.156	11.112	23.545	.512
AG2427-AM	Inch	2060	1-1/2	15/32	8	.516/.522	2-5/64	4-7/32	7/16	31/32	1.50
	mm		38.1	11.906		13.106/13.258	52.784	107.156	11.112	24.606	.680
AG2427-AF	Inch	2060	1-1/2	15/32	8	.643/.649	2-5/64	4-7/32	7/16	31/32	1.46
	mm		38.1	11.906		16.332/16.484	52.784	107.156	11.112	24.606	.662
AG2427-1AF	Inch	2060	1-1/2	15/32	8	.643/.649	2-5/64	4-7/32	7/16	31/32	1.46
	mm		38.1	11.906		16.332/16.484	52.784	107.156	11.112	24.606	.662
AG2438-1AF	Inch	Special	1-1/4	.460	11	.643/.649	2-5/64	4-17/32	9/16	1-1/32	1.50
	mm		31.75	11.684		16.332/16.484	52.784	115.093	14.287	26.193	.680
AG2565-2AF	Inch	555	1.630	21/32	8	.643/.649	2-5/64	4-3/4	7/16	1-3/16	1.69
	mm		41.402	16.668		16.332/16.484	52.784	120.65	11.112	30.162	.776
AG2565-3AF	Inch	555	1.630	21/32	8	.643/.649	2-5/64	4-3/4	7/16	31/32	1.50
	mm		41.402	16.668		16.332/16.484	52.784	120.65	11.112	24.606	.680
AG2566-2AF	Inch	550	1.630	21/32	8	.643/.649	2-5/64	4-3/4	11/16	1-3/16	1.69
	mm		41.402	16.668		16.332/16.484	52.784	120.65	11.112	30.162	.776
AG2566-4AF	Inch	550	1.630	21/32	8	.630/.636	2-5/64	4-3/4	11/16	1-1/32	1.50
	mm		41.402	16.668		16.002/16.154	52.784	120.65	11.112	24.606	.680

Single Pitch Chain Idlers



PART NO.	UNIT	CHAIN NO	PITCH	ROLLER DIA	TEETH	A	B	C	D	E	F	WEIGHT (LBS / kg)
AG2318-S	Inch	40 or 41	1/2	.312 / .306	18	.643 / .649	1	3-1/16	15/64	45/64	.750	.42
	mm			7.924 / 7.772		16.322 / 16.484	25.4	77.787	5.953	17.859	19.05	.190
AG2318-A	Inch	40 or 41	1/2	.312 / .306	18	.516 / .522	1	3-1/16	15/64	45/64	.750	.45
	mm			7.924 / 7.772		13.106 / 13.258	25.4	77.787	5.953	17.859	19.05	.204
AG2416	Inch	50	5/8	.400	17	.643 / .649	7/8	3-5/8	11/32	51/64	.927	.74
	mm			10.16		16.322 / 16.484	22.225	92.075	8.731	20.240	23.5458	.335
AG2416-9**	Inch	50	5/8	.400	17	.643 / .649	7/8	3-5/8	11/32	51/64	.927	.74
	mm			10.16		16.322 / 16.484	22.225	92.075	8.731	20.240	23.5458	.335
AG2416-A	Inch	50	5/8	.400	17	.516 / .522	7/8	3-5/8	11/32	51/64	.927	.77
	mm			10.16		13.106 / 13.258	22.225	92.075	8.731	20.240	23.5458	.349
AG2416-A6**	Inch	50	5/8	.400	17	.516 / .522	7/8	3-5/8	11/32	51/64	1.125	.77
	mm			10.16		13.106 / 13.258	22.225	92.075	8.731	20.240	28.575	.349
AG2416-AP	Inch	50	5/8	.400	17	.516 / .522	7/8	3-5/8	11/32	51/64	.927	.77
	mm			10.16		13.106 / 13.258	22.225	92.075	8.731	20.240	23.5458	.349
AG2436*	Inch	50	5/8	.400	17	.643 / .649	7/8	3-5/8	11/32	27/32	.927	.98
	mm			10.16		16.322 / 16.484	22.225	92.075	8.731	21.431	23.5458	.444
AG2436-A*	Inch	50	5/8	.400	17	.516 / .522	7/8	3-5/8	11/32	27/32	.927	1.01
	mm			10.16		13.106 / 13.258	22.225	92.075	8.731	21.431	23.5458	.458
AG2417	Inch	60	3/4	15/32	15	.643 / .649	7/8	3-29/32	7/16	53/64	.927	.80
	mm			11.906		16.322 / 16.484	22.225	99.218	11.112	21.034	23.5458	.362
AG2417-A	Inch	60	3/4	15/32	15	.516 / .522	7/8	3-5/8	11/32	53/64	.927	.83
	mm			11.906		13.106 / 13.258	22.225	92.075	8.731	21.034	23.5458	.376
AG2437*	Inch	60	3/4	15/32	15	.643 / .649	7/8	3-5/8	11/32	27/32	.927	1.08
	mm			11.906		16.322 / 16.484	22.225	92.075	8.731	21.431	23.5458	.489
AG2437-9**	Inch	60	3/4	15/32	15	.643 / .649	7/8	3-5/8	11/32	27/32	.927	1.08
	mm			11.906		16.322 / 16.484	22.225	92.075	8.731	21.431	23.5458	.489
AG2437-A*	Inch	60	3/4	15/32	15	.516 / .522	7/8	3-5/8	11/32	27/32	.927	1.11
	mm			11.906		13.106 / 13.258	22.225	92.075	8.731	21.431	23.5458	.503
AG2437-A9**	Inch	60	3/4	15/32	15	.516 / .522	7/8	3-5/8	11/32	27/32	.927	1.11
	mm			11.906		13.106 / 13.258	22.225	92.075	8.731	21.431	23.5458	.503

*Extra Heavy Gauge Steel

**Zinc Plated Yellow Hexavalent Chromium Finish