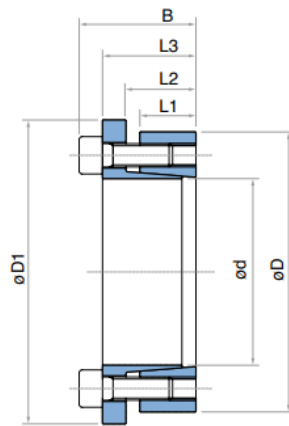


Tollok Locking Assemblies

TLK 133 & 134- Self Centering - Medium Torque



TLK 133														
Dimensions							Tightening Screws			Transmissible Torque Nm	Transmissible Axial Force Kn	Pressure		Weight Kg
d	D	L1	L2	L3	B	D1	No.	DIN912 12.9	Tightening Torque Ms (Nm) TLK 133			Shaft Surface Pressure N/mm ²	Hub Surface Pressure N/mm ²	
20	47	17	22	28	34	53	6	M6	17	281	28	220	95	0.32
24	50	17	22	28	34	56	6	M6	17	329	28	180	90	0.32
25	50	17	22	28	34	56	6	M6	17	420	34	210	105	0.32
28	55	17	22	28	34	61	6	M6	17	470	34	190	95	0.41
30	55	17	22	28	34	61	6	M6	17	500	34	175	95	0.41
32	60	17	22	28	34	67	8	M6	17	720	45	220	115	0.41
35	60	17	22	28	34	67	8	M6	17	790	45	200	115	0.41
38	65	17	22	28	34	72	8	M6	17	850	45	185	105	0.45
40	65	17	22	28	34	72	8	M6	17	900	45	175	105	0.45
42	75	20	25	33	41	82	8	M8	41	1529	73	225	125	0.91
45	75	20	25	33	41	82	8	M8	41	1650	73	215	125	0.91
48	80	20	25	33	41	87	8	M8	41	1760	73	200	120	0.91
50	80	20	25	33	41	87	8	M8	41	1830	73	195	120	0.91
55	85	20	25	33	41	92	8	M8	41	2299	83	200	130	0.91
60	90	20	25	33	41	97	8	M8	41	2510	83	185	125	0.91
65	95	20	25	33	41	102	9	M8	41	3060	94	190	130	0.91
70	110	24	30	40	50	117	8	M10	83	4670	133	210	135	1.81
75	115	24	30	40	50	122	8	M10	83	5001	133	195	125	1.81
80	120	24	30	40	50	127	8	M10	83	5303	133	185	125	1.81
85	125	24	30	40	50	132	10	M10	83	6302	148	195	135	1.81
90	130	24	30	40	50	137	10	M10	83	6752	148	185	130	2.27
95	135	24	30	40	50	142	10	M10	83	7903	166	195	135	2.27
100	145	26	32	44	56	152	8	M12	145	9702	194	200	140	3.18
110	155	26	32	44	56	162	8	M12	145	10604	194	180	130	3.18
120	165	26	32	44	56	172	9	M12	145	13001	216	185	135	3.18
130	180	34	40	54	66	187	12	M12	145	18906	290	175	125	4.99
140	190	34	40	54	68	197	9	M14	230	20506	290	165	120	5.44
150	200	34	40	54	68	207	10	M14	230	25002	333	175	130	5.9
160	210	34	40	54	68	217	12	M14	230	29007	362	180	135	5.9

* Also Stocking: TLK133-250X355

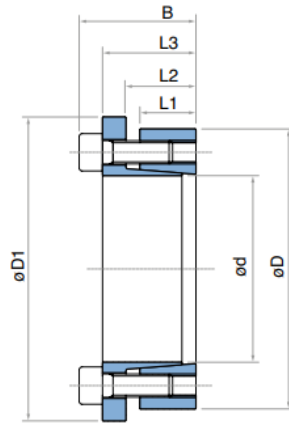
TLK134-30X55, TLK134-30X80

* All other TLK134 Locking Assemblies available on request

Table continued on next page.

Tollok Locking Assemblies

TLK 133 & 134- Self Centering - Medium Torque



TLK 133														
Dimensions							Tightening Screws			Transmissible Torque Nm	Transmissible Axial Force Kn	Pressure		Weight Kg
d	D	L1	L2	L3	B	D1	No.	DIN912 12.9	Tightening Torque Ms (Nm) TLK 133			Shaft Surface Pressure N/mm ²	Hub Surface Pressure N/mm ²	
170	225	44	50	64	78	232	12	M14	230	34011	400	140	105	8.16
180	235	44	50	64	78	242	12	M14	230	36006	400	135	105	8.62
190	250	44	50	64	78	257	15	M14	230	47496	500	160	120	9.98
200	260	44	50	64	78	267	15	M14	230	50003	500	150	115	10.43
220	285	50	56	72	88	292	12	M16	355	61006	556	152	118	11.34
240	305	50	56	72	88	312	15	M16	355	83000	695	154	121	15
260	325	50	56	72	88	332	18	M16	355	108000	834	170	136	17
280	355	60	66	84	102	362	16	M18	485	125000	892	141	111	24
300	375	60	66	84	102	382	18	M18	485	150000	1003	148	118	25

* Also Stocking: TLK133-250X355

TLK134-30X55, TLK134-30X80

* All other TLK134 Locking Assemblies available on request