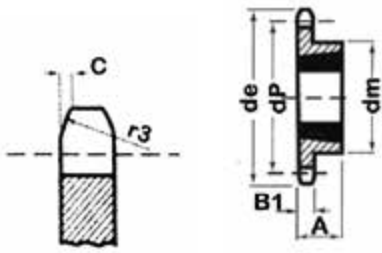


## 20B-1 Taper Lock



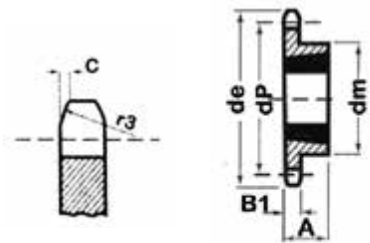
Type 1

Pinions	mm
Tooth Radius r3	32
Radius Width C	3.5
Tooth Width B1	18.5

Chain	mm
Pitch	31.75
Inside	19.56
Roller $\phi$	19.05

Teeth	de	dp	Simplex			
			dm	A	Bush	Type
13	147.5	132.7	98	45	2517	1
14	157.6	142.7	108	45	2517	1
15	167.6	152.7	118	45	2517	1
16	177.7	162.8	120	50	2517	1
17	187.8	172.8	120	50	2517	1
18	197.8	182.9	120	50	2517	1
19	207.9	192.9	120	50	2517	1
20	217.9	203	120	50	2517	1
21	228	213	140	55	2517	1
22	238.1	223.1	140	55	2517	1
23	248.2	233.2	140	55	2517	1
24	258.3	243.2	140	55	2517	1
25	268.4	253.3	140	55	2517	1
26	278.4	263.4	150	55	2517	1
27	288.5	273.5	150	55	3020	1
28	299	283.6	150	55	3020	1
29	308.8	293.6	150	55	3020	1
30	319	303.8	150	55	3020	1
38	399.6	384.5	160	55	3020	1

## 24B-1 Taper Lock



Type 1

Pinions	mm
Tooth Radius r3	5
Radius Width C	0.6
Tooth Width B1	21.1

Chain	mm
Pitch	38.1
Inside	25.4
Roller $\phi$	25.4

Teeth	de	dp	Simplex			
			dm	A	Bush	Type
13	174.2	159.18	110	44	2517	1
14	157.6	142.7	-	44	2157	1
15	198.2	183.26	150	44	2517	1
16	177.7	162.8	-	44	2517	1
17	222.3	207.34	165	50.8	3020	1
18	197.8	182.9	-	50.8	3020	1
19	246.5	231.49	165	50.8	3020	1
20	217.9	203	-	50.8	3020	1
21	270.6	255.65	165	50.8	3020	1
23	294.8	279.80	165	50.8	3020	1
25	319	304	165	50.8	3020	1
27	288.5	273.5	165	50.8	3020	1
30	319	303.8	165	89	3535	1
38	476.2	461.39	215	-	4040	2