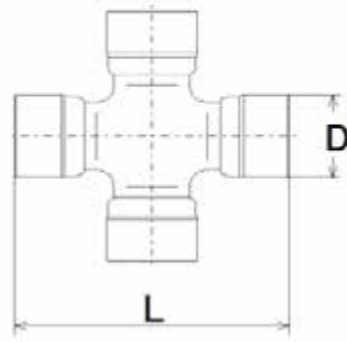
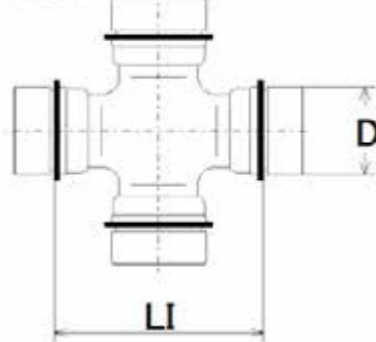




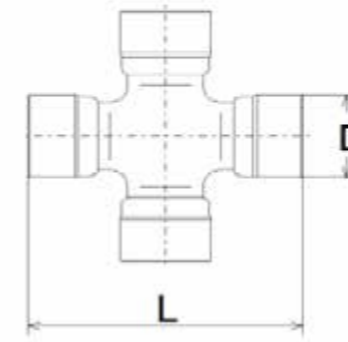
EXTERNAL CIRCLIP TYPE
FIG A



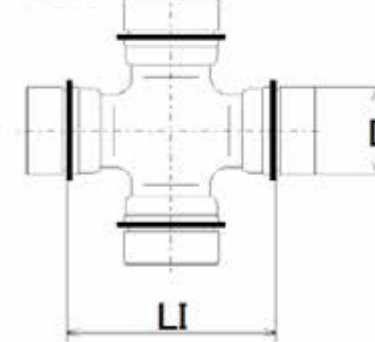
INTERNAL CIRCLIP TYPE
(INSIDE SNAP)
FIG B



EXTERNAL CIRCLIP TYPE
FIG A



INTERNAL CIRCLIP TYPE
(INSIDE SNAP)
FIG B



5 Series

P	Fig.	Lubrication	Dimensions						Remark	Description	GMB Part No.	Alternate Part No
			L	LI	D	P	R	Hole Pitch				
5-170X	B	3	-	38.10	23.80	-	-	-	LUBRICATED - CENTRE (GREASE NIPPLE LOCATED CENTRE OF CROSS)	1000 SERIES	G5-170X	-
5-178X	A	2	92.08	-	30.16	-	-	-	LUBRICATED - SIDE (GREASE NIPPLE LOCATED SIDE / BETWEEN BEARING CUPS)	1350 SERIES	G5-178X	-

CP Series

P	Fig.	Lubrication	Dimensions						Remark	Description	GMB Part No.	Alternate Part No
			L	LI	D	P	R	Hole Pitch				
CP-35N-1	-	3	-	-	-	-	-	-	LUBRICATED - CENTRE (GREASE NIPPLE LOCATED CENTRE OF CROSS)	ROCKWELL	CP35N-3	AM35
CP-55N	A	3	109.60	-	38.89	-	-	-	LUBRICATED - CENTRE (GREASE NIPPLE LOCATED CENTRE OF CROSS)	ROCKWELL	CP55N	AM55

K5 Series

P	Fig.	Lubrication	Dimensions						Remark	Description	GMB Part No.	Alternate Part No
			L	LI	D	P	R	Hole Pitch				
K5-13XR	A	2	81.76	-	26.99	-	-	-	LUBRICATED - SIDE (GREASE NIPPLE LOCATED SIDE / BETWEEN BEARING CUPS)	1310 SERIES	G5-153X	-
K5-A18R	A	3	92.08	-	30.20	-	-	-	LUBRICATED - CENTRE (GREASE NIPPLE LOCATED CENTRE OF CROSS)	1350/T60 PTO	GU-2200	A600
K5-A18RA	A	3	92.00	-	30.18	-	-	-	LUBRICATED - CENTRE (GREASE NIPPLE LOCATED CENTRE OF CROSS)	1350/T60 PTO	-	A622
K5-A536	A	3	106.30	-	30.20	-	-	-	LUBRICATED - CENTRE (GREASE NIPPLE LOCATED CENTRE OF CROSS)	1410 SERIES PTO	GU-2050	A700
K5-A538	A	3	106.30	-	34.93	-	-	-	LUBRICATED - CENTRE (GREASE NIPPLE LOCATED CENTRE OF CROSS)	1480 / T80 PTO	-	A824
K5-A546	A	3	51.96	-	19.05	-	-	-	LUBRICATED - CENTRE (GREASE NIPPLE LOCATED CENTRE OF CROSS)	500 SERIES CENTRE LUBE	GU-350A	A165
K5-A588	A	3	54.00	-	22.00	-	-	-	LUBRICATED - CENTRE (GREASE NIPPLE LOCATED CENTRE OF CROSS)	T10 PTO	GUA-3	A110
K5-A589	A	3	55.00	-	22.00	-	-	-	LUBRICATED - CENTRE (GREASE NIPPLE LOCATED CENTRE OF CROSS)	WALTERSCHEID	GUA-4	A010
K5-A590	A	3	70.00	-	27.00	-	-	-	LUBRICATED - CENTRE (GREASE NIPPLE LOCATED CENTRE OF CROSS)	T30 PTO	-	A311
K5-A591	A	3	80.00	-	30.20	-	-	-	LUBRICATED - CENTRE (GREASE NIPPLE LOCATED CENTRE OF CROSS)	PTO	GUA-11	A500
K5-A592	A	3	76.00	-	32.00	-	-	-	LUBRICATED - CENTRE (GREASE NIPPLE LOCATED CENTRE OF CROSS)	WALTERSCHEID	GUA-14	A035
K5-A593	A	3	89.00	-	36.00	-	-	-	LUBRICATED - CENTRE (GREASE NIPPLE LOCATED CENTRE OF CROSS)	WALTERSCHEID	GUA-20	A036
K5-A595	A	3	104.00	-	42.00	-	-	-	LUBRICATED - CENTRE (GREASE NIPPLE LOCATED CENTRE OF CROSS)	WALTERSCHEID	-	A026
K5-A64	A	3	61.30	-	23.80	-	-	-	LUBRICATED - CENTRE (GREASE NIPPLE LOCATED CENTRE OF CROSS)	1140/T20 PTO	GU-500	A220
K5-A693	A	3	94.00	-	35.00	-	-	-	LUBRICATED - CENTRE (GREASE NIPPLE LOCATED CENTRE OF CROSS)	BYPY	-	A7N
K5-GB10R	A	2	106.30	-	30.16	-	-	-	LUBRICATED - SIDE (GREASE NIPPLE LOCATED SIDE / BETWEEN BEARING CUPS)	1410 SERIES	GU-2000	A723
K5-LGB36R	A	3	74.61	-	26.99	-	-	-	LUBRICATED - CENTRE (GREASE NIPPLE LOCATED CENTRE OF CROSS)	1300/T40 PTO	GU-1100	A421

RUJ Series

P	Fig.	Lubrication	Dimensions						Remark	Description	GMB Part No.	Alternate Part No
			L	LI	D	P	R	Hole Pitch				
K5-LGB80R	A	2	61.30	-	23.80	-	-	-	LUBRICATED - SIDE (GREASE NIPPLE LOCATED SIDE / BETWEEN BEARING CUPS)	1140 AUTOMOTIVE	GUIS-56	-
RUJ-1788	B	3	-	46.04	26.99	-	-	-	LUBRICATED - CENTRE (GREASE NIPPLE LOCATED CENTRE OF CROSS)	12N SERIES	-	A222
RUJ-2038	B	1	-	54.00	27.39	-	-	-	NON LUBRICATED (NO GREASE NIPPLE)	21R SERIES	RUJ-2038	-
RUJ-2041	B	2	-	64.00	32.00	-	-	-	LUBRICATED - SIDE (GREASE NIPPLE LOCATED SIDE / BETWEEN BEARING CUPS)	TOYOTA LANDCRUISER	GUT-20	-
RUJ-2109	B	3	-	52.00	29.00	-	-	-	LUBRICATED - CENTRE (GREASE NIPPLE LOCATED CENTRE OF CROSS)	TOYOTA HILUX 4WD	GUT-21	-
RUJ-3002	A	2	92.08	-	26.99	-	-	-	LUBRICATED - SIDE (GREASE NIPPLE LOCATED SIDE / BETWEEN BEARING CUPS)	1330 SERIES	G5-1203X	-